

Centralized Communications Framework

December 1, 2025



STATE OF NEW JERSEY
STATE EMPLOYMENT AND TRAINING COMMISSION[Home](#)[About SETC](#)[Contact Us](#)[Job Seekers](#)[Partners](#)[Commission, Councils and Committees](#)[NJ Businesses](#)[Organized Labor](#)[Local Workforce Development Boards \(WDBs\)](#)[What is a Workforce Development Board?](#)[Local WDBs in NJ](#)[Planning](#)[Policy](#)[Performance](#)[Industry Sector Strategies](#)[Home](#) > [Local Workforce Development Boards \(WDBs\)](#) > [Local WDBs in NJ](#) > Local WDBs in New Jersey

Local WDBs in New Jersey

[WDB Chair and WDB Director Contacts List \[pdf\]](#)

New Jersey Local Workforce Development Boards by Region

North Region:

Bergen County WDB: <https://bergenjobcenter.com/>**Essex County WDB:** <http://essexcountynj.org/economic-dev-training-employment/>**Greater Raritan WDB (Hunterdon and Somerset Counties):** <https://www.thegrwdb.org>**Hudson County-Jersey City WDB:** <http://hcstonline.org/wdb/index.html>**Morris-Sussex-Warren WDB:** [Workforce Development Board Of Northwest New Jersey \(wdbnnj.org\)](http://workforcedevelopmentboardofnorthwestnewjersey.org)**Newark City WDB:** www.nlwdb.org**Passaic County WDB:** <http://wdbpc.org/>**Union County WDB:** <http://ucnj.org/wdb/>



NEW JERSEY
DEPARTMENT OF LABOR
AND WORKFORCE DEVELOPMENT



Local Area Directory

NJ Department of Labor and Workforce Development P.O. Box 110, Trenton, NJ 08625-0110 Robert Asaro-Angelo, Commissioner Phone: 609.292.2323 Fax: 609.633.9271	
Julie Diaz, Deputy Commissioner Phone: 609.376.5959 Fax: 609.633.9271	Kim G. Walker, Chief of Staff Phone: 609.984.1571 Fax: 609.633.9271
<u>WORKFORCE DEVELOPMENT</u>	
Dr. Charyl Yarbrough, Assistant Commissioner, EAS Employment Accessibility Services Phone: 609.633.6907 Email: Charyl.Yarbrough@dol.nj.gov	Dr. Yolanda Allen, Assistant Commissioner, Workforce Division of Workforce Development Phone: 609.984.9414 Fax: 609-292.7318 Email: Yolanda.Allen@dol.nj.gov
Dr. Felicia Hopson, Director, DVRS Division of Vocational Rehabilitation Services Phone: 609.633.6907 Email: Felicia.Hopson@dol.nj.gov	Baden Almonor, Deputy Assistant Commissioner, Workforce Office of Career Services <u>Phone:</u> 609.777.1042 <u>Fax:</u> 609.984.8434 <u>Email:</u> Baden.Almonor@dol.nj.gov
Sherie Jenkins, Director, Workforce Office of Transitional Workforce Services Phone: 609.874.8957 Email: Sherie.Jenkins@dol.nj.gov	James Manning, Director, Workforce Office of Apprenticeship and Work-Based Learning Phone: 609.633.6438 Email: James.Manning@dol.nj.gov
Andre Hardy, Assistant Director, Workforce Office of Career Services, Field Services Phone: 609.376.5432 Email: Andre.Hardy@dol.nj.gov	Kendra Lee, Assistant Director, Workforce Office of Program Oversight and Development Phone: 609.376.5445 Email: Kendra.Lee@dol.nj.gov
Howard Miller, Assistant Director, Business Engagement & Sector Strategies Phone: 609.984.4437 Email: Howard.Miller@dol.nj.gov	

Revision Date: December 1, 2025
Email updates to: Debra.Cusanno@dol.nj.gov

Contents

ATLANTIC WDB AREA	3
BERGEN WDB AREA	4
BURLINGTON WDB AREA	5
CAMDEN WDB AREA	6
CUMBERLAND/SALEM/CAPE MAY WDB AREA	7
ESSEX WDB AREA	8
GLOUCESTER WDB AREA	9
GREATER RARITAN WDB AREA	10
HUDSON WDB AREA	11
MERCER WDB AREA	12
MIDDLESEX WDB AREA	13
MONMOUTH WDB AREA	14
MORRIS/SUSSEX/WARREN WDB AREA	15
NEWARK WDB AREA	16
OCEAN WDB AREA	17
PASSAIC WDB AREA	18
UNION WDB AREA	19
BUSINESS SERVICES AND VETERANS BUSINESS SERVICE REPRESENTATIVES BY AREA	20
VETERANS BUSINESS SERVICE REPRESENTATIVES BY AREA AND BUSINESS SERVICES REGIONAL COORDINATORS	21

America's One-Stop Operating System (AOSOS) NextGen V.7.4.10



Workforce Information Systems and Evaluation Unit

WISE



- **workforceinformationsystems@dol.nj.gov**

Kamlesh Patel, NJDOL Supervising Administrative Analyst

Kamlesh.Patel@dol.nj.gov

609-292-5742

Seetha Vaidyanathan, Chief Workforce Information Systems
and Evaluation Unit.

Seetha.Vaidyanathan@dol.nj.gov

609-984-3513

WIOAPOD

The Workforce Innovation and Opportunity Act Program Oversight and Development Unit provides essential administrative support and strategic management to the 17 Local Workforce Areas (LWDA). This includes policy development, technical assistance, training and monitoring to enhance effectiveness and ensure compliance.

- Policy
- Technical Assistance
- Monitoring

WIOAPOD@dol.nj.gov

NJDOL Office of Career Services
Baden Almonor, Deputy Assistant Commissioner

Kendra Lee, Assistant Director/POD

Andre Hardy, Assistant Director/Field Services

John Bicica-Chief of Employment & Training

Patricia Robertson-Chief of Employment & Training

Kyle Gornick, Public Policy Specialist

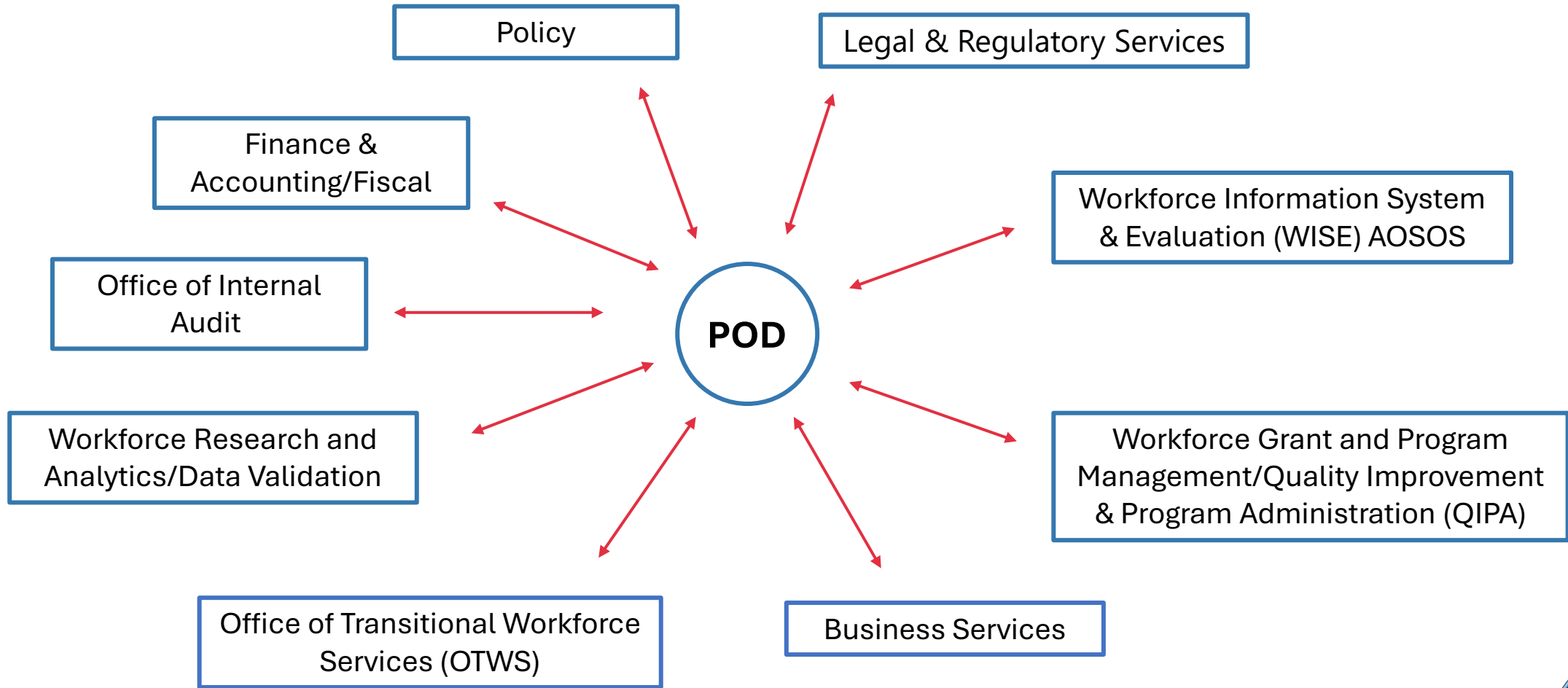
Raul Ludizaca, Supervisor of Employment and Training

Sabrina Sullivan- Coordinator of Employment & Training

Elana Peterson- Administrative Support

Monitors	Technical Assistance (TA)
Raji Ramachandra (Raji.Ramachandra@dol.nj.gov) Atlantic, Burlington, Camden, CSCM, Gloucester, Ocean, Union	Carolina Sarria (Carolina.Sarria@dol.nj.gov) CSCM, Essex, Gloucester, Middlesex, Ocean, Passaic
Thomas O’Connor (Thomas.Oconnor@dol.nj.gov) Essex, Greater Raritan, Middlesex, Monmouth, NWNJ, Passaic	Christina Lorenzo (Christina.Lorenzo@dol.nj.gov) Atlantic, Greater Raritan, Hudson, Newark, NWNJ, Union
Patricia Shump (Patricia.Shump@dol.nj.gov) Bergen, Hudson, Mercer, Newark	Abigail Pingilinan (Abigail.Pangilinan@dol.nj.gov) Bergen, Burlington, Camden, Mercer, Monmouth

POD's Interconnection within NJDOL



Fiscal Request Process



Types of Requests

1

All requests require the submission of completed and signed forms to WIOAPOD@dol.nj.gov

Modifications ADW

[Adult DW Budget
Modification
Form.pdf](#)

Modification Youth

[Youth Budget
Modification
Form.pdf](#)

Additional Funding

[RequestforAdditional
WIOAFunding.pdf](#)

Transfers

[RequestforTransfer
ofWIOAFunds.pdf](#)

Purchases

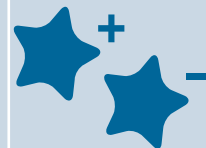
[Purchase Guidance
PY24-5.pdf](#)

2

Requests are reviewed in accordance with policy, guidance, and/or the availability of funds before a determination is made.



WFNJ funding requests should also be submitted to WIOAPOD@dol.nj.gov



WFNJ@dol.nj.gov
Technical assistance on policy, service delivery, and performance

